



CALLAWASSIE™ ISLAND

featuring

MAY RIVER CUSTOM HOMES



ALLOWING YOUR DREAM HOME TO BECOME A REALITY

May River Custom Homes is a family-owned and operated company founded by husband and wife, Jay and Jenny Nelson. Jay and Jenny established May River Custom Homes with the convictions of providing exceptional customer service while designing and building the ideal custom home for their clients in Bluffton and beyond.

As a true custom home builder, each team member at May River Custom Homes understands that a home is more than just finishes; it's the family's design center and should be designed as such. Whether May River Custom Homes is building for a young family of four or a married couple of 40 years, the same level of quality and consideration is ensured. Besides the experienced builders and contractors, the team includes a design coordinator to assist customers with various decisions when it comes to the look, feel, and function of their new custom home.

By utilizing a collaborative effort between the clients and the architect/designer, May River Custom Homes' team of builders and designers spend time getting to know their clients in order to learn their lifestyle as well as the homeowners' current and future needs.

Jenny and Jay treat their clients as if they are extended members of the family because the couple understands that May River Custom Homes isn't merely building rooms with a roof, but rather allowing someone's dream home to become a reality ... always keeping in mind that the home is where the heart is.

MAY RIVER CUSTOM HOMES



OWNER - JAY NELSON



MAYRIVERCUSTOMHOMES.COM



843.815.9010



1 MARIANNA WAY
UNIT 101
BLUFFTON, SC 29910

featured
HOME PLANS

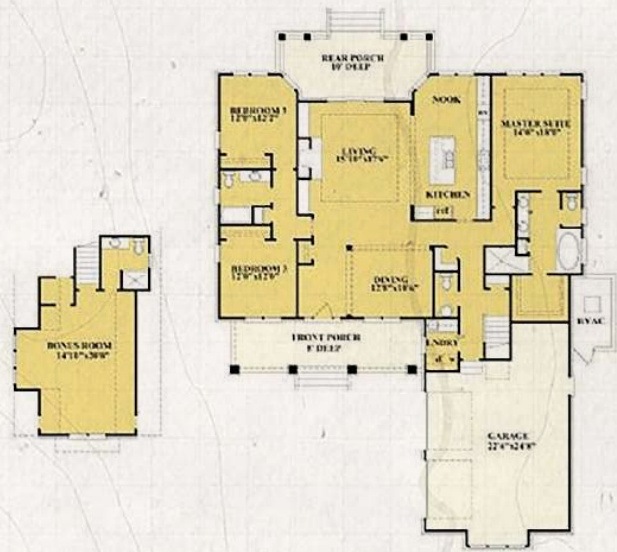
The
MARSH HEN



THE MARSH HEN

At 2,695 feet, The Marsh Hen is a traditional 3-bedroom home designed for the homeowner who wishes to enjoy all of the features of a larger home, such as a formal dining room and a bonus room, without taking up any additional unnecessary space. With a centralized living room and dining area, The Marsh Hen allows for a smooth transition from mealtime to quality family fun. The grand owner's suite ensures that you are able to enjoy your space and privacy, and you can rest easy knowing that the two additional bedrooms with a shared bath allow your family and guests to do the same.

COST ESTIMATE AS SHOWN: \$680,000 - \$750,000



KEY FEATURES



2,695
SQ.FT



3
BEDROOMS



3.5
BATHS



2
FLOORS



2 CAR
GARAGE

The
HERON



KEY FEATURES



3,298
SQ.FT



3
BEDROOMS



3.5
BATHS



BONUS
ROOM
OPTION



2.5 CAR
GARAGE



THE HERON MODEL

With The Heron, we sought to add a touch of Nantucket flair to a classic Lowcountry feel. This spacious home boasts a grand living area that leads to a large back porch perfect for unwinding and entertaining in the fresh air. You, your family, and your guests will have plenty of space with dedicated owner's quarters, two bedrooms, a bonus room, and a two-car garage. On the exterior, the cedar shingles along with the inviting front porch bring a sense of home to The Heron before you even step inside.

COST ESTIMATE AS SHOWN: \$750,000 - \$850,000

Styles are representative of possible homes available to build.