



CALLAWASSIETM ISLAND

featuring

ARTISAN CUSTOM HOMES



THE DIFFERENCE BETWEEN A HOUSE AND A HOME

Not every house is a home. A home is something more; it's a place that greets you like a warm embrace. A place where you feel inspired, a place to entertain friends and family or retreat in the serenity of your favorite chair. Above all, home is the place that satisfies your soul because it was made just for you. At Artisan, we understand the difference.

We have the experience, the resources, and skill to custom build your home from start to finish, leaving nothing to chance. That means end-to-end quality and craftsmanship, while we bring your vision to life. We sweat the small stuff, as well as the big for our clients.

We are able to manage the entire building process from site selection to the architectural design, to inspections and surveying, to streamlining building processes, to the final coat of paint. When we hand you the keys, you can rest assured you are the owner of a quality crafted home that will last for generations.

We welcome the opportunity to work with you and provide the highest level of personalized service, quality craftsmanship, and most importantly, deliver you a beautiful home that exceeds your expectations.



ARTISAN

CUSTOM HOMES



OWNER—HENRY VALA



[DISCOVERARTISANHOMES.COM](https://www.discoverartisanhomes.com)



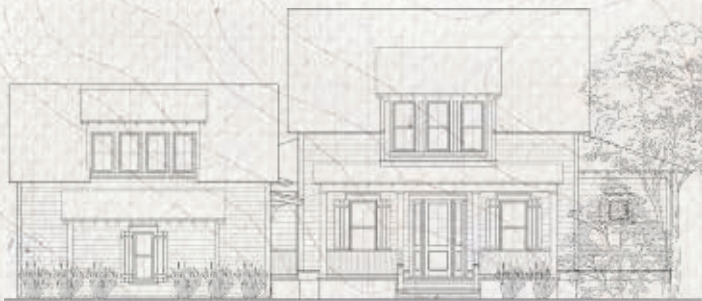
843.501.0901



12 CELADON DRIVE
BEAUFORT, SC 29907

featured HOME PLANS

The MAGNOLIA



THE MAGNOLIA MODEL

The classic cottage look of the Magnolia harkens back to turn-of-the-century Lowcountry homes, while modern conveniences and comforts make this a personal oasis. Features include an expansive great room, bar space for entertaining, and screened porch. A mudroom off the kitchen leading to a covered porch gives this model added function and charm. Best of all, this popular plan boasts a floor plan ideal for empty nesters with great welcoming space for visiting children or guests. Extra space located on the second floor has its own private sitting room and additional private bed and bathrooms.

COST ESTIMATE AS SHOWN: \$378+ PER SQ FOOT



KEY FEATURES



2,665
SQ.FT



3
BEDROOMS



3.5
BATHS



2
FLOORS



2 CAR
GARAGE
W/GOLF
CART BAY

The PALMETTO



KEY FEATURES



2,115
SQ.FT



3
BEDROOMS



2.5
BATHS



1
FLOOR



2 CAR
GARAGE
W/GOLF
CART BAY



THE PALMETTO MODEL

Spacious living area, large windows, flowing floor plan, and an inviting front porch are just some of the features that make the Palmetto such a coveted home plan. Impressive features include: screened outdoor dining, engineered hardwood floors, cozy fireplace, and quartz countertops. This single floor design is ideal for couples with a perfect bedroom arrangement for visiting family or guests, while providing privacy and comfort.

COST ESTIMATE AS SHOWN: \$400+ PER SQ FOOT

Styles are representative of possible homes available to build.